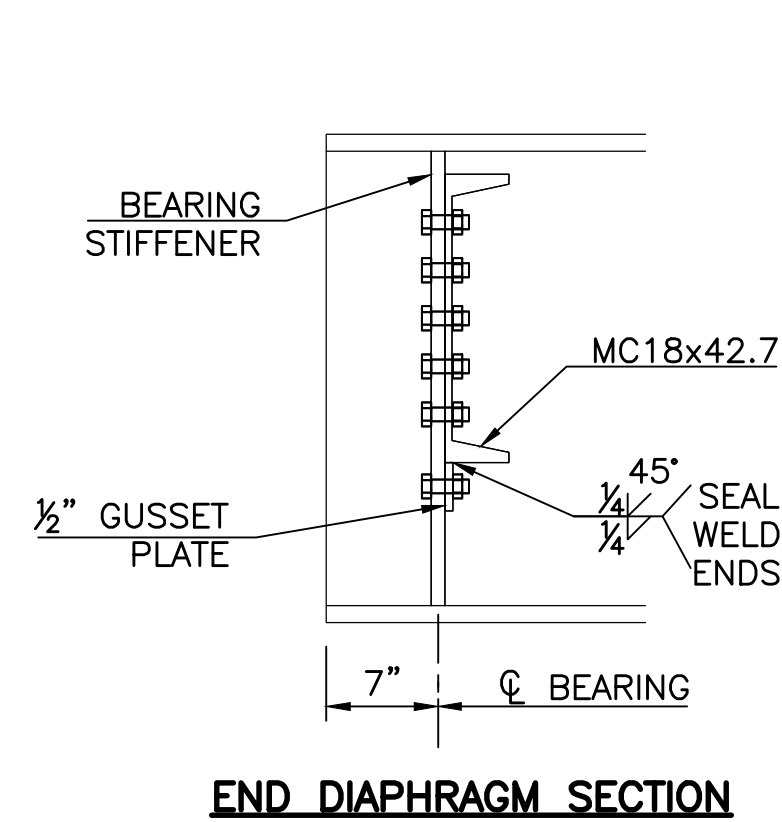
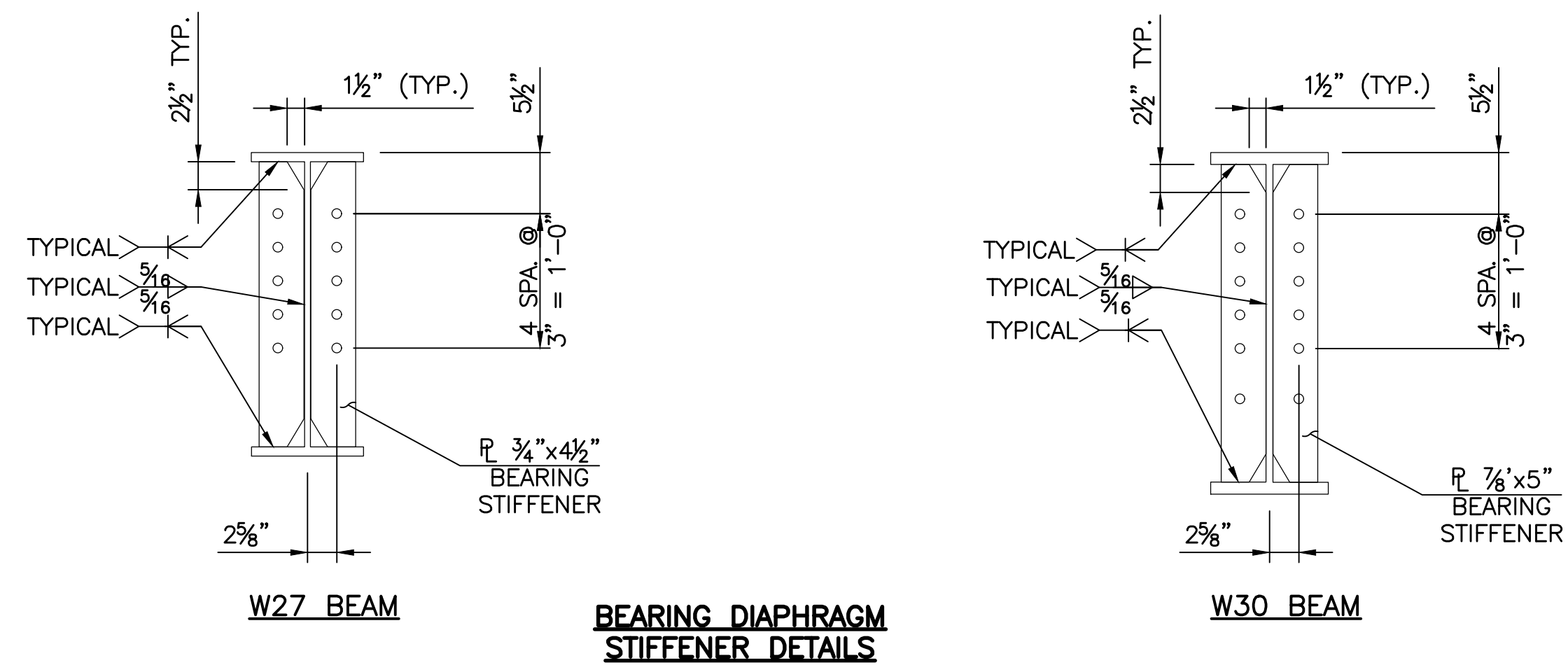
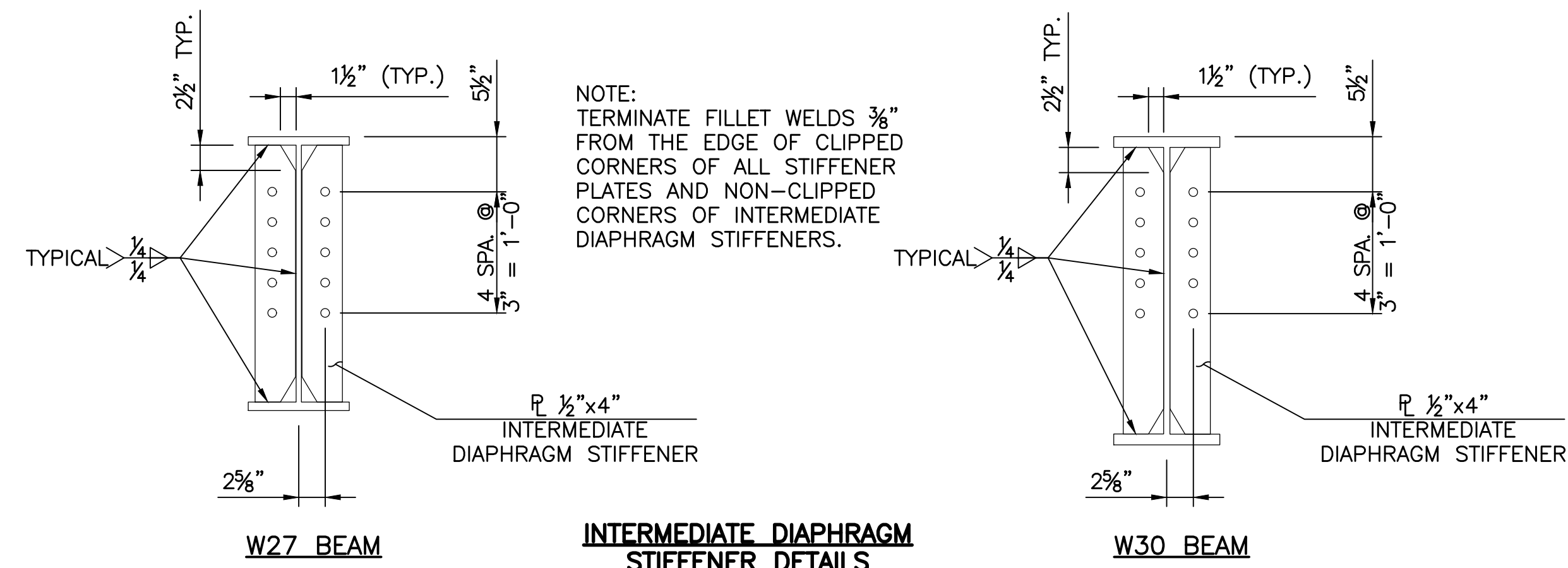
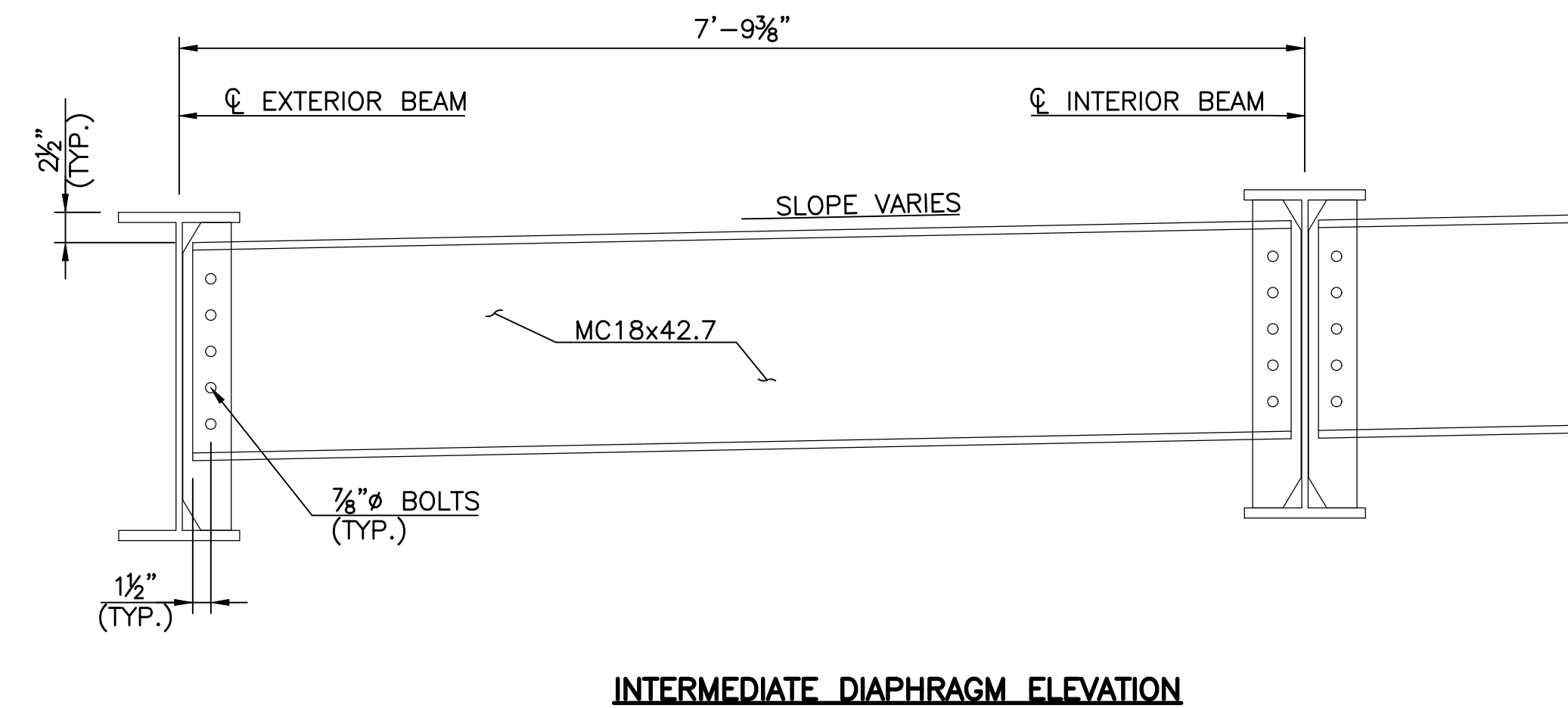


REVISIONS		
REV. NO.	DESCRIPTION	DATE

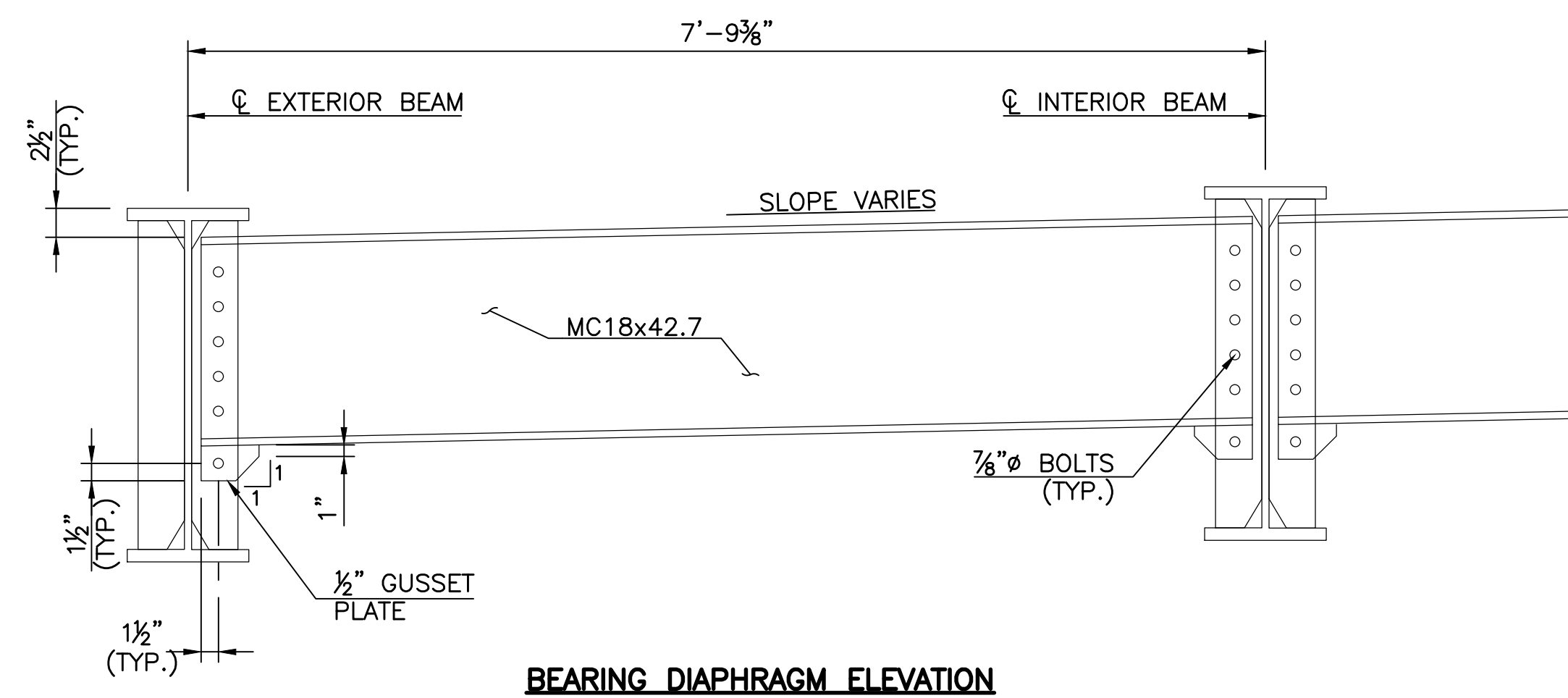


NOTE:
CONTRACTOR SHALL SKEW THE STIFFENERS ACCORDINGLY PRIOR TO WELDING TO GIRDER.



NOTES:
PROVIDE STRUCTURAL STEEL FOR CHANNEL DIAPHRAGMS AND GUSSET PLATES IN ACCORDANCE WITH AASHTO MS70 (ASTM A709), GRADE 50W (WEATHERING STEEL, CHARPY V-NOTCH TESTING NOT REQUIRED). USE BOLTS CONFORMING TO AASHTO M164 (ASTM A325). PROVIDE ALL BOLTS, NUTS, WASHER AND WELDING WITH WEATHERING CHARACTERISTICS.

THE CONTRACTOR MAY SUBSTITUTE A BENT PLATE DIAPHRAGM IN LIEU OF CHANNEL AND GUSSET PLATE SHOWN AT NO ADDITIONAL COST TO THE DEPARTMENT. PROVIDE 1/2" MINIMUM PLATE THICKNESS FORMED IN THE SHAPE OF THE CHANNEL WITH 4" MINIMUM FLANGES. FABRICATE BENT PLATE DIAPHRAGM TO A DEPTH EQUAL OR GREATER THAN THAT SHOWN FOR THE COMBINED CHANNEL AND GUSSET PLATE.



NOTE:
GUSSET PLATE WITH ONE BOLT CONNECTION ON W30 BEAMS SHOWN. NO GUSSET PLATE REQUIRED ON W27 BEAMS.

V:\MISC\2012\2005-07 0001 EC-1414 US-64 Task 3\Comp\Comp\Steel\2-53-112-10001-07-STRUCTURAL STEEL.dwg Job 12_2017 - 9/22/16 wpm/ak

DESIGN	MW	11/16	TULSA COUNTY	US-64 OVER 97TH W. AVE.
DRAWN	SDK	11/16	OKLAHOMA DEPARTMENT OF TRANSPORTATION	
CHECKED	HRA	11/16	DETAILS OF STRUCTURAL STEEL (SHEET 2 OF 2)	
APPROVED				
WALTER P MOORE			STATE JOB NO. 28884(04)	SHEET NO. 53